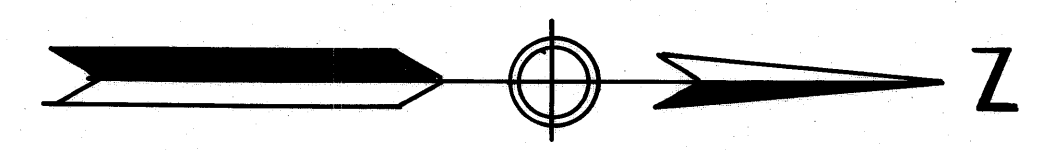
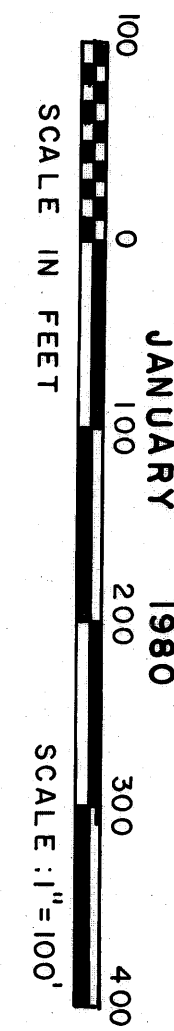


**SHEET 4 OF 4**  
 I, LOUISE V. ISAACS, Clerk of the CIRCUIT COURT of MARTIN COUNTY, FLORIDA, HEREBY CERTIFY that this PLAT was FILED for RECORD in PLAT BOOK 8 PAGE 77, MARTIN COUNTY FLORIDA, PUBLIC RECORDS, this day of \_\_\_\_\_, 1981.  
 LOUISE V. ISAACS  
 CLERK of the CIRCUIT COURT  
 MARTIN COUNTY, FLORIDA  
 By: \_\_\_\_\_  
 Deputy Clerk  
 FILE NO. \_\_\_\_\_

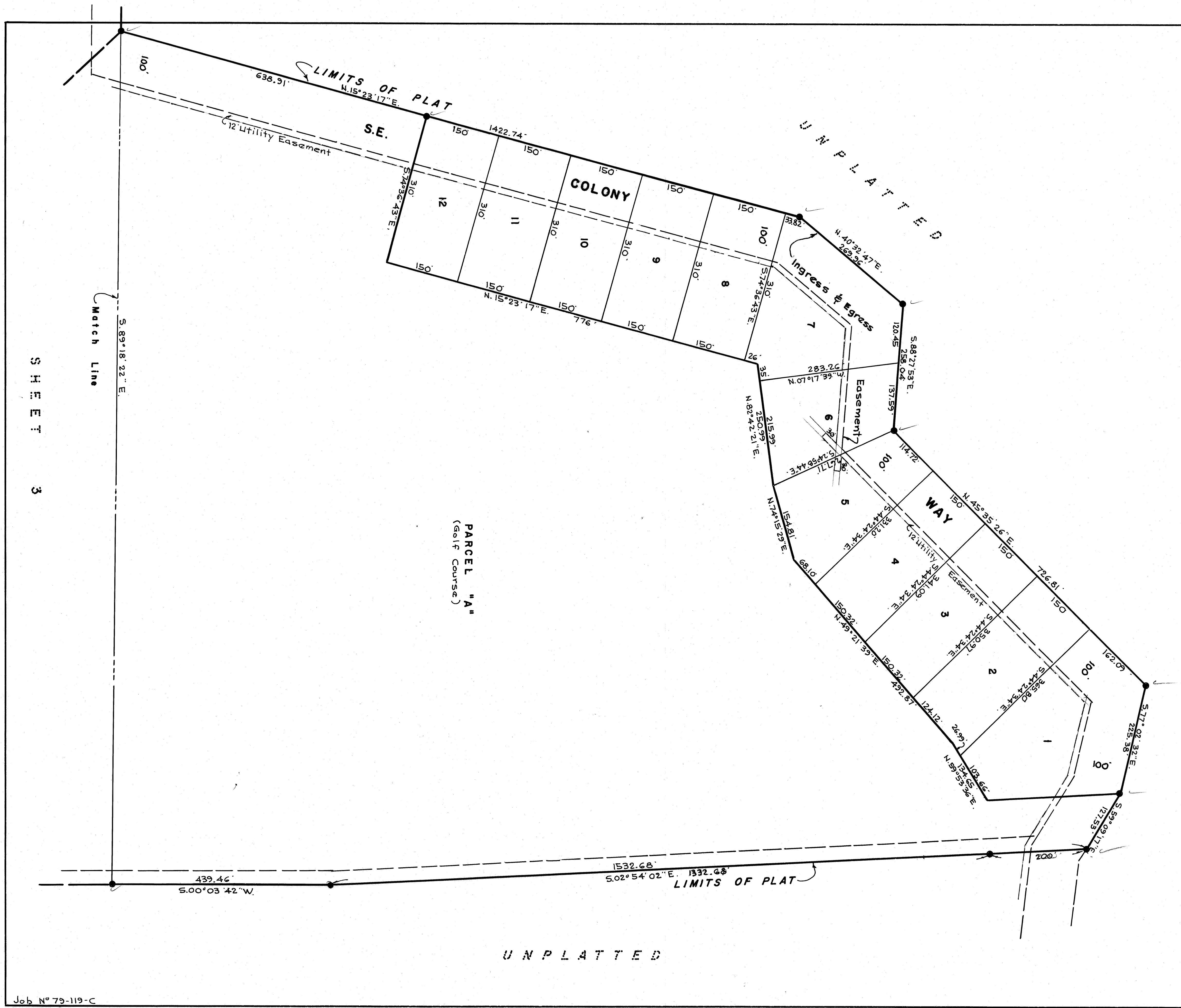


**"THE LINKS"**  
 IN PART OF SECTION 27, TWP. 40 S., RGE. 41 E.  
 MARTIN COUNTY, FLORIDA

GEE & JENSON  
 ENGINEERS-ARCHITECTS-PLANNERS, INC.  
 WEST PALM BEACH, FLORIDA  
 JANUARY 1980  
 SCALE: 1"=100'



**NOTES**  
 ● denotes Permanent Reference Monument  
 ○ denotes Permanent Control Point  
 All bearings shown hereon are relative to the South Line of Section 27-40-41 which is assumed to bear N.89°17'17"W.



SHEET 3